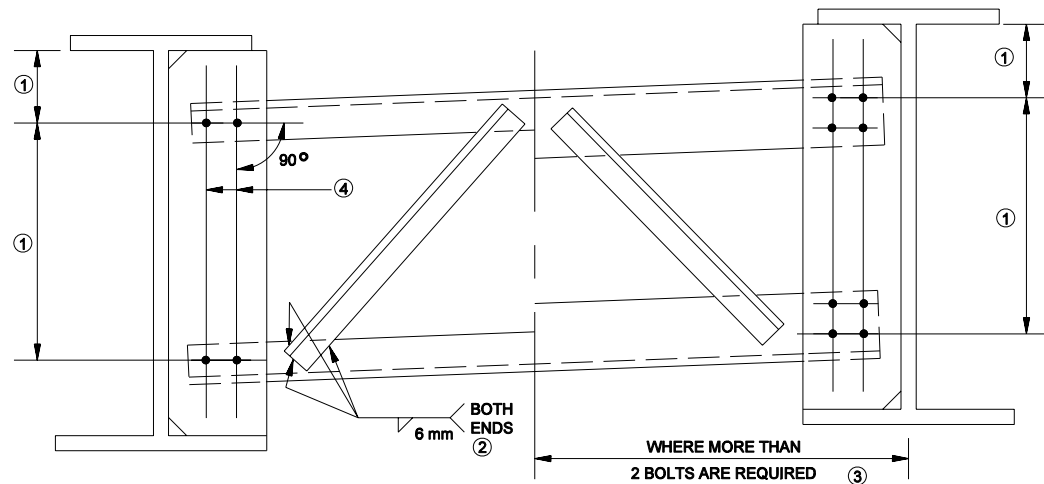


* IF THIS ANGLE IS LESS THAN 30° ,
A "K" FRAME SHOULD BE USED.

X-FRAME



K-FRAME

- ① KEEP THESE DIMENSIONS THE SAME AND SLOPE THE STRUTS.
- ② KEEP ALL WELDING ON ONE SIDE.
- ③ INCREASE SIZE OF THE STRUTS AS REQUIRED FOR LOAD.
- ④ USE OVERSIZED HOLES TO MINIMIZE THE SLOPE OF HOLES IN STRUTS.

TYPICAL CROSS FRAMES

Figure 64-5D